

**Pride International School Myanmar**  
**Academic Year 2020 - 2021**  
**Plan A: Guidelines for Reopening of EYFS**

**School Schedule**

Our EYFS classes (Pre-Nursery, Nursery and Kindergarten) will be from 8:30 AM to 12:20 PM, Monday to Friday (except on gazette holidays). Our school day will consist of five physical classroom periods.

<b>Pre-Nursery, Nursery &amp; KG</b>	
1	08.30 – 09.10
2	09.10 – 09.50
Break Time 09.50 – 10.15	
3	10.15 – 10.55
4	10.55 – 11.35
5	11.35 – 12.20

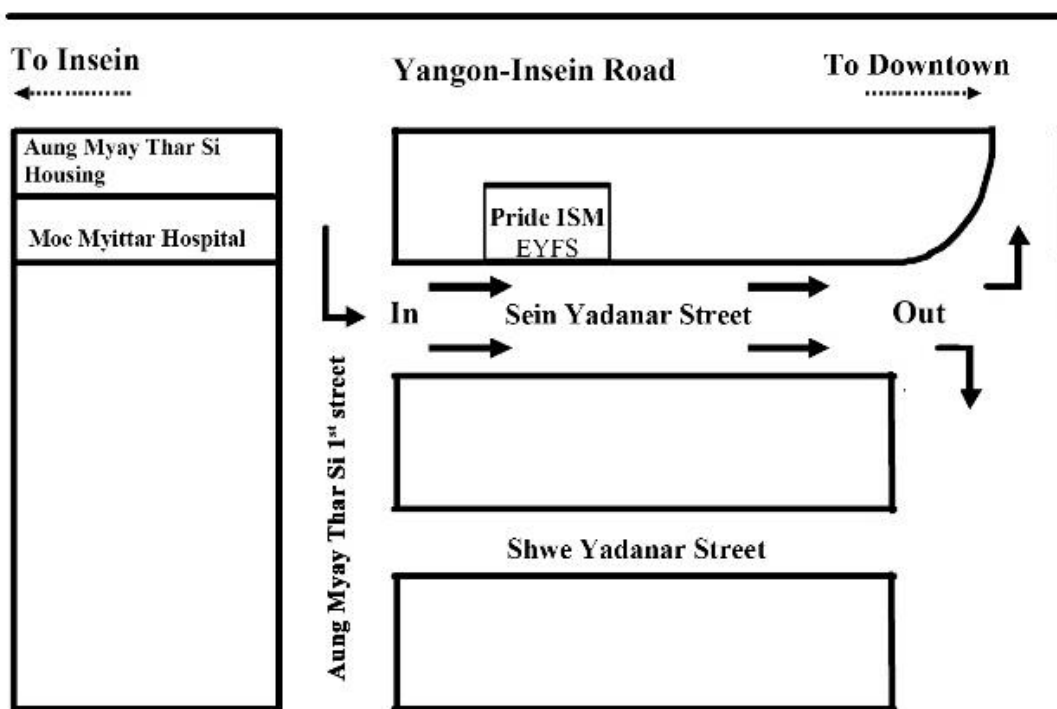
**Steps to follow before coming to school and throughout the day**

- If a child is sick with a fever or a cough, or has any other respiratory illness, we kindly request that you keep your child at home and call the relevant reception to report for sick leave.
- Both students and parents/guardians must wash their hands thoroughly with soap and water before coming into the school.
- When coming to school, it is compulsory for students to wear their masks and face shields.
- It is also important to pack water and some snacks for your children.



## School Hours - Start and End time

- For safety measures, we advise parents/guardians to not send your child/children to school before their scheduled time. Therefore, EYFS students should not be at school earlier than 8:00 AM.
- Each family will be given two Security Cards. During pick-up and drop-off hours, parents/guardians are expected to wear the Security Card and display the Pride ISM Car Pass on the windscreen of the vehicle.
- For the safety of our students during pick-up and drop-off time, we would like to request our Parents/Guardians to comply with the traffic guidelines laid by our school traffic team.
- All vehicles must follow the designated routes shown on the map below.

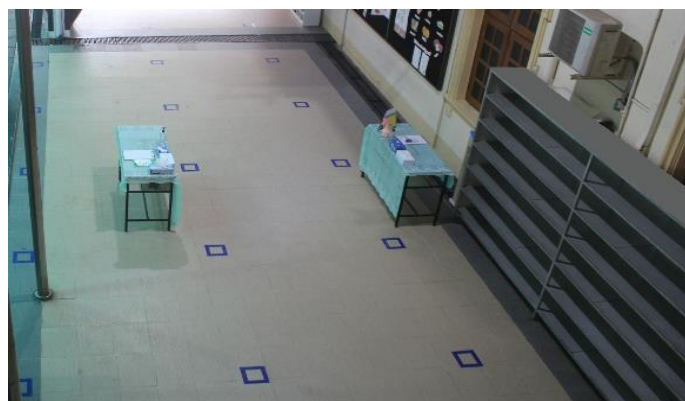
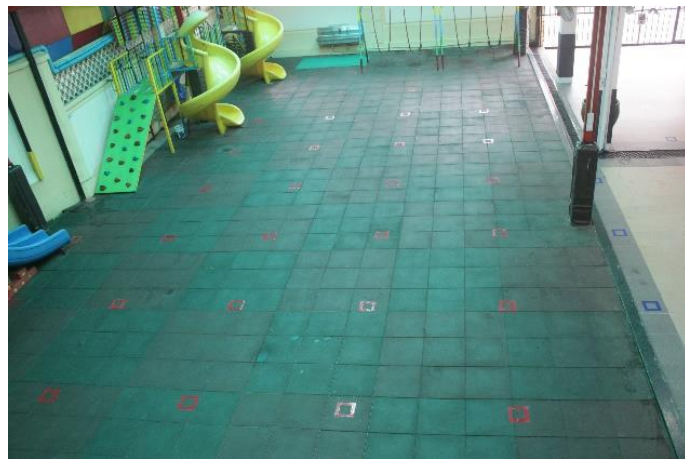


- Parents/Guardians will not be permitted to enter the school.
- Due to physical distancing regulations, we would like to request parents/guardians to make a 2-day prior appointment through the reception by phone, should there be a need to meet the Principal, the Parents' Counsellor and/or teachers. In accordance with government guidelines, all students, parents/guardians must wear face masks upon entering the school.
- To prevent an unnecessary number of parents and guardians on the school premises we will not accept any meetings without an appointment. Should there be a need to be on the school grounds for emergency purposes, everyone must abide by the **physical distancing** regulations implemented at Pride ISM.

- Upon entering the school, students will queue on the designated arrows to get their temperature taken. Students with a temperature above 38°Celsius or 100.4°Fahrenheit will be requested to go home. For those parents/guardians who are unable to come immediately, your child will be taken care of in isolation at our Sick Bay.



- Students will wash their hands with soap and water or with hand sanitizer and go to their classrooms.



## Classroom and Corridors

- The seats in the classroom are allocated to ensure sufficient physical distancing between students at all times. Students will only be allowed to sit at their assigned seats.
- Hand sanitizers will be provided in every classroom as part of the hand hygiene system.
- Visual guides and signs will be displayed to ensure that students keep a physical distance in all corridors and other areas of the school.



## Physical Development

Outdoor playtimes are allocated within the school day to support the physical development of our students. A maximum of two classes with 15 students each will be allowed to play at the outdoor playground per day. Frequently touched surfaces and objects will be disinfected before and after students have used the playground.



## Break-Time

Students are expected to bring their own meals. During the break-time, students will have their meals in their assigned seats under the supervision of teachers and staff.

## Hygiene Practices and Healthcare

Our school has taken many measures to protect the health and safety of our students, teachers and staff. We maintain a high standard of hygiene in accordance with government guidelines.





### **Safety Measures Parents/Guardians should practise at home for their children**

- Educate children on the proper ways to wash hands, wear masks and to dispose of household rubbish.
- Keep the latest medical records and a month's travel history of children and family members.
- Practise appropriate physical distancing behaviour and manners.
- Exercise proper coughing and sneezing etiquette.
- Be able to wear masks or face shields for the required amount of time at school.
- Practise cleaning and disinfecting their surroundings and promote personal hygiene habits.
- Change clothes as soon as students reach home, place them in the laundry basket and immediately wash their hands afterwards.

## Plan B: Guidelines for EYFS's Home-Based Online Learning

If physical classes are not permitted, we may have to continue the Academic Year (2020 – 2021) with our Home-based Online Learning Programme.

### Online Learning Platforms

- Zoom Meeting
- Seesaw Learning Platform

### School Schedule

- EYFS classes will be from Monday to Friday (except on gazette holidays).
- We will use the Zoom Meeting platform to offer the following face-to-face classes:

Pre-Nursery, Nursery & Kindergarten	
1	09:00 – 09:40
Break 09:40 – 09:50	
2	09:50 – 10:30
Break 10:30 – 11:00	
3	11:00 – 11:40
Break 11:40 – 11:50	
4	11:50 – 12:30

### Lessons

During our school day, all lessons and activities will be taught face-to-face using the Zoom Meeting platform. We will also use the Seesaw Learning Platform to upload additional lessons, worksheets and assignments daily from Monday to Friday for students to work in their own time to develop their understanding of what has been taught during the live sessions.

### Subjects

The following subjects will be taught: English Language, Mathematics, Understanding of the World, Arts & Design, Music, Myanmar Language, Chinese Language/Additional English and Physical Development.

### Assignment

Students will need to complete and upload the given work on the Seesaw Learning Platform for the teachers to do the marking. After marking, feedback will be given, and students' work will be recorded.

*\*The above information is subject to change depending on the circumstances.*